

CW-WZ-0195

700-6000MHz External Antenna

Key Features

Frequency: 698-960 / 1700-2700 / 3300-3800 / 5150-5850MHz

SMA Male Connector

Dimensions: 230*63mm

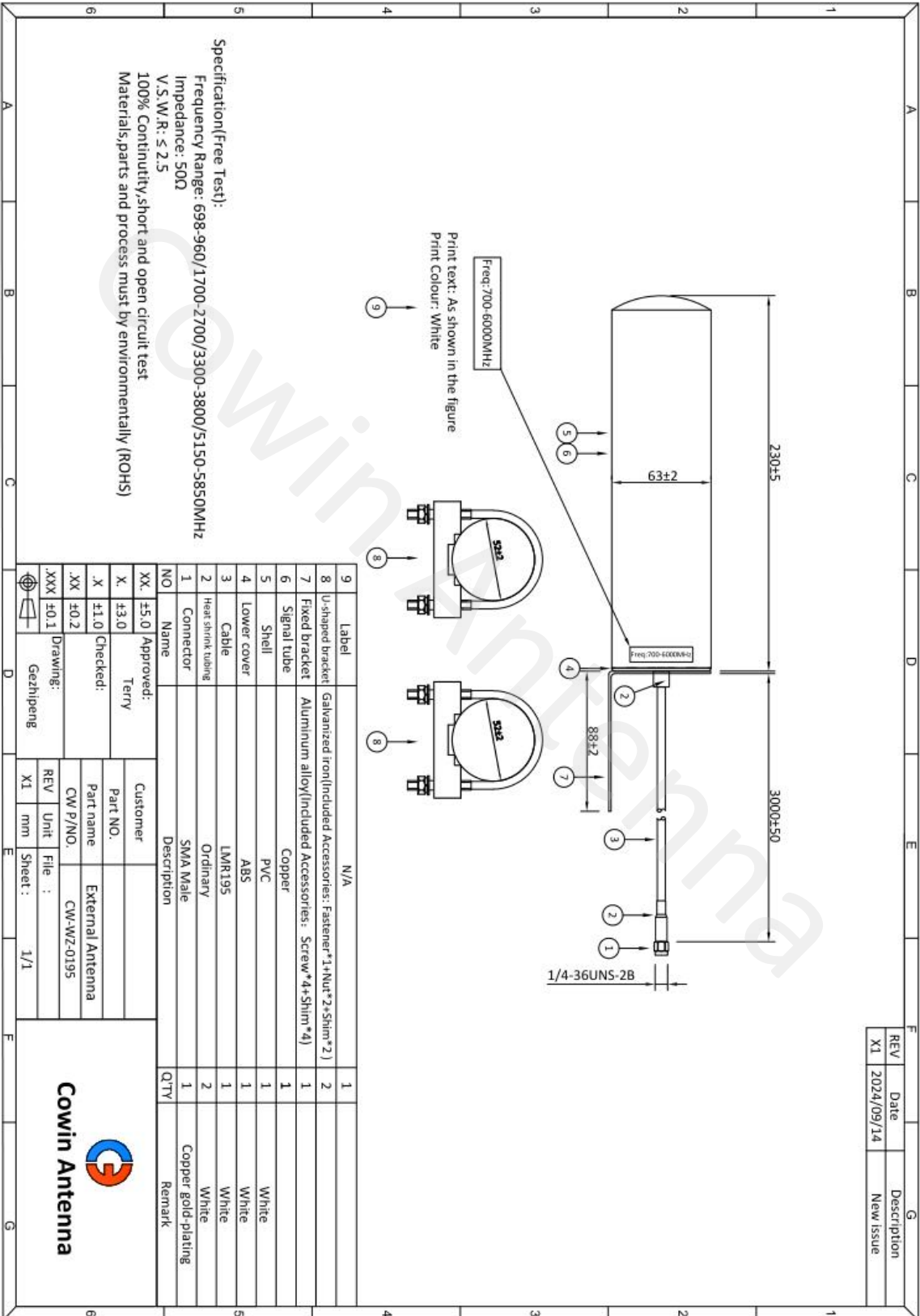


1. Antenna Electrical Characteristics

Band (MHz)	
Frequency (MHz)	698-960 / 1700-2700 / 3300-3800 / 5150-5850
VSWR	≤2.5
Efficiency (%)	82.22 / 87.5 / 84.53 / 79.98
Peak Gain (dBi)	2.4 / 3.24 / 3.97 / 4.13
Impedance (Ohm)	50
Polarisation	Vertical
Max. Input Power (W)	10
Connector Type	SMA Male

2. Material and environmental characteristics

External Structure	PVC/ABS
Inner Structure	Signal tube
Cable Type	LMR195
Connector Type	SMA Male
Dimensions (mm)	230*63
Antenna Colour	White
Operation Temperature	-40 to +80
Storage Temperature	-40 to +80
Antenna Storage life(year)	10
Substance Compliance	ROHS



4. Antenna test parameters

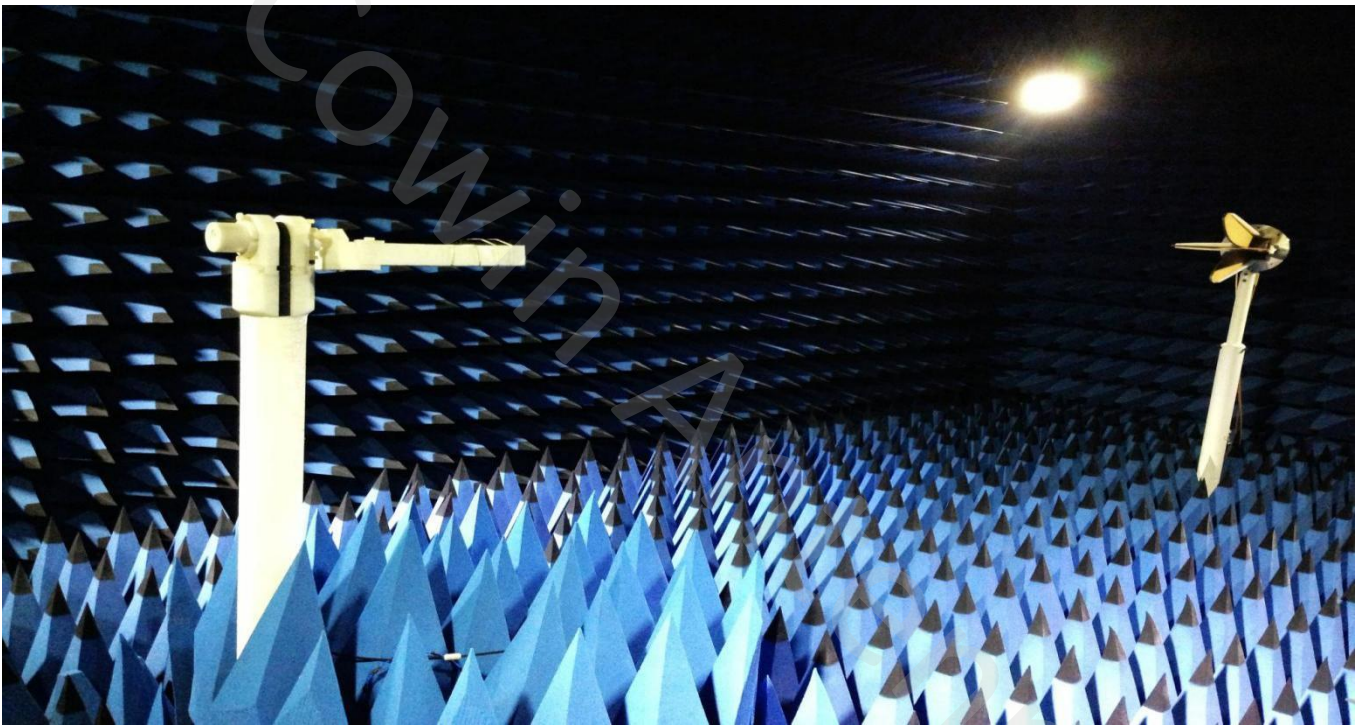
Antenna Measurement Conditions:

Mounted on Ground Plane of 280 x 80 mm

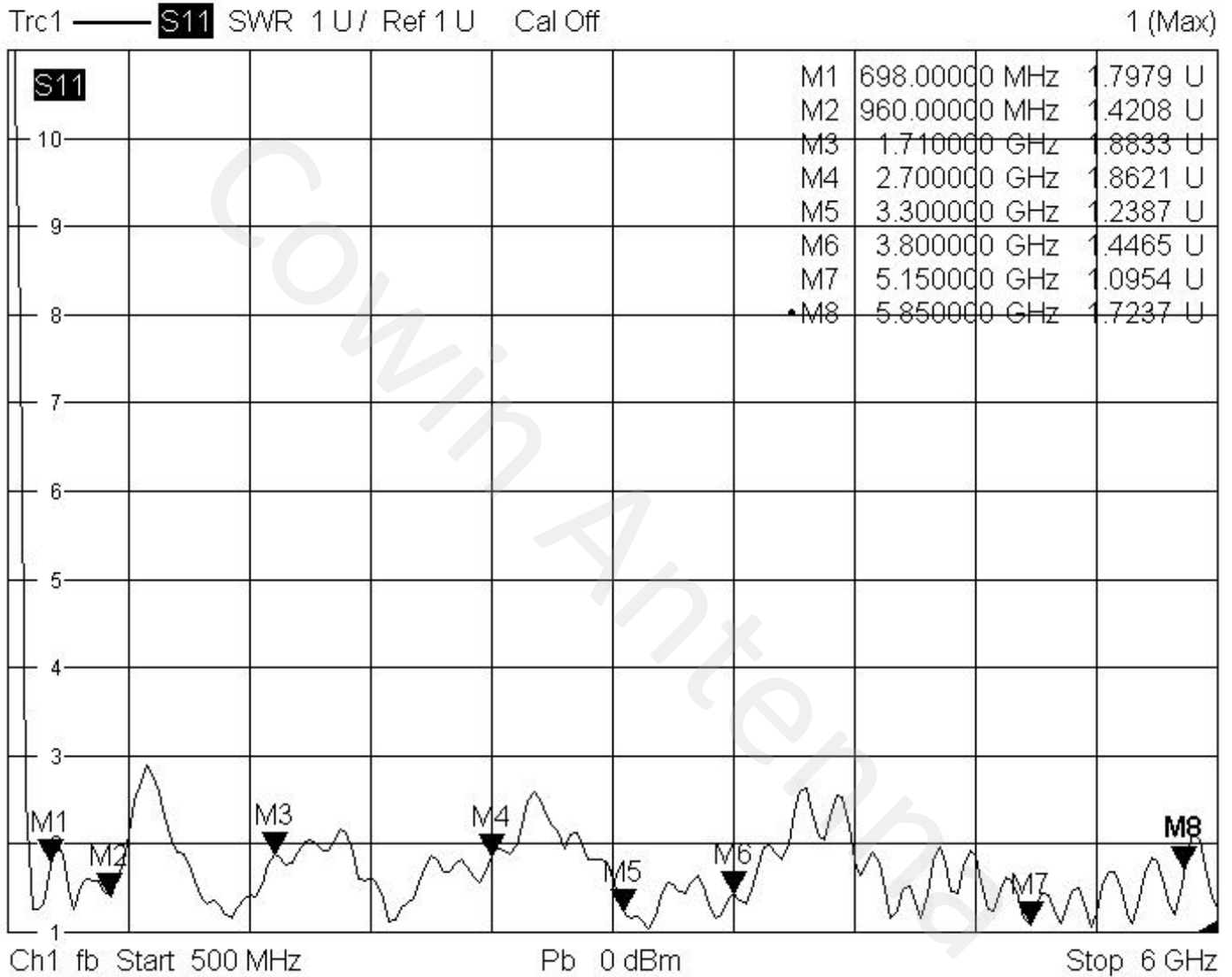
Measured in Certified 3D Anechoic Chamber

The network analyzer is Agilent 5071c

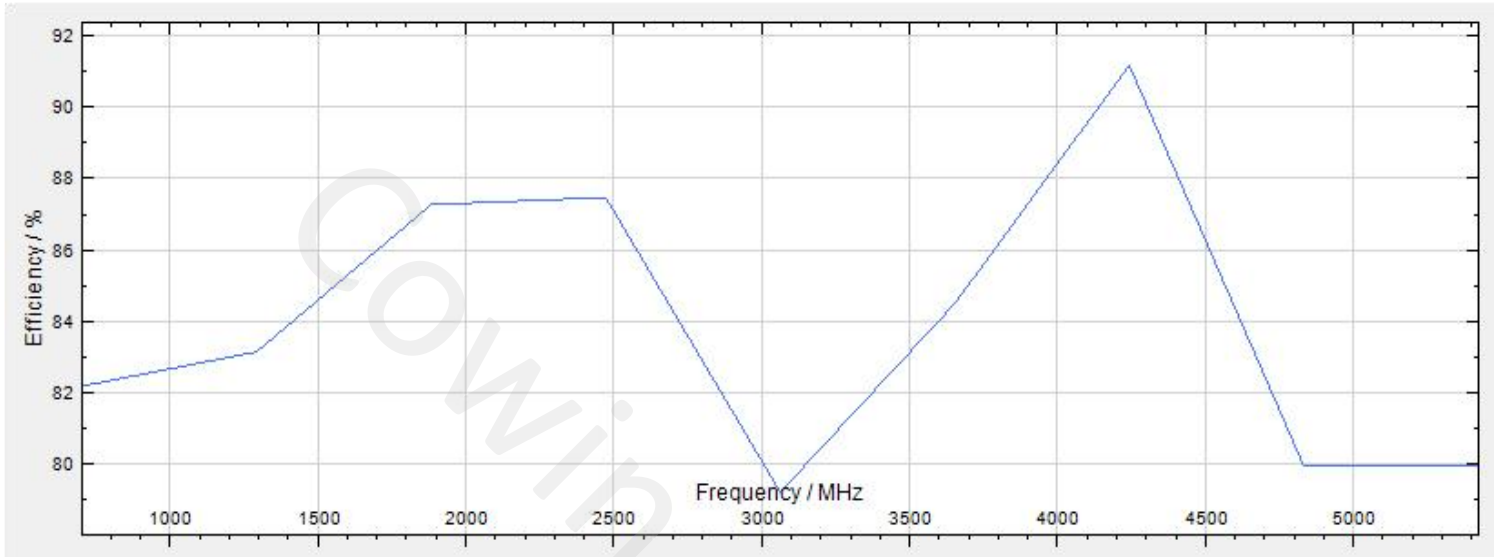
The comprehensive tester is Agilent cmv500



4.1 VSWR



4.1 Efficiency



4.2 Data summary

Frequency (MHz)	Max Gain(dBi)	Efficiency (%)
700	2.4	82.22
1290	2.81	83.18
1880	3.24	87.3
2470	2.82	87.5
3060	3.74	79.25
3650	3.97	84.53
4240	3.88	91.2
4830	3.91	79.98
5420	4.13	79.98

4.5 3D&2D Radiation Patterns

