

300-400MHz Fiberglass Antenna



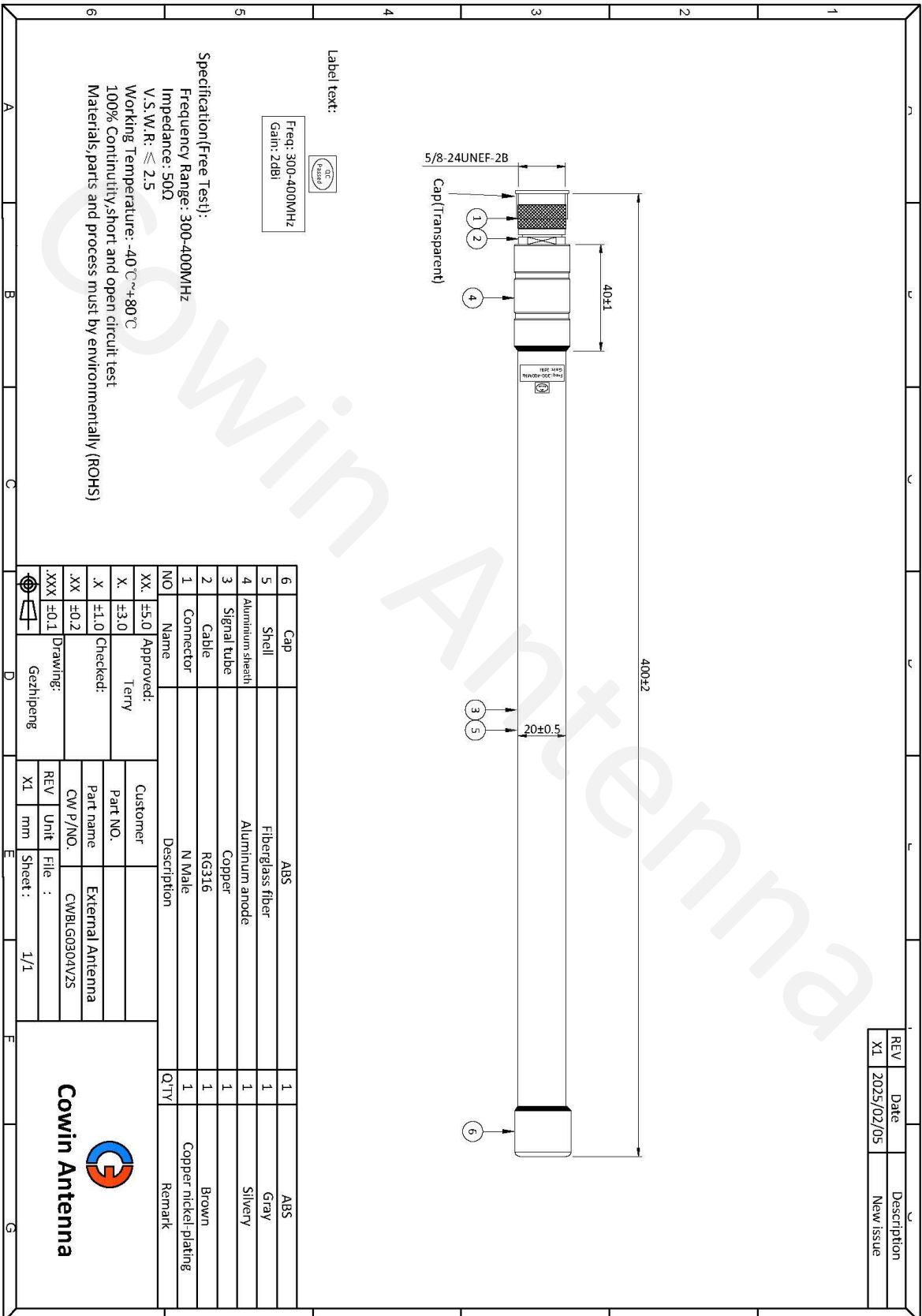
Electrical Specifications 电性指标

Part Number 料号	CWBLG0304V2S
Frequency Range 频率范围	300-400MHz
Bandwidth 带宽	100MHz
Peak Gain 峰值增益	2dBi
Radiation Direction 辐射方向	Omnidirectional
Polarization 极化方式	Vertical
Electrical Downtilt 电下倾角	/
Half Power Beamwidths 半功率波瓣宽度	/
First Upper Sidelobe Suppression 第一上旁瓣抑制	/
Front-to-rear ratio 前后比	/
Impedance 输入阻抗	50Ω
VSWR 电压驻波比	≤ 2.5
Maximum Power 最大功率	50W
Lightning Protection 雷电保护	DC Grounding

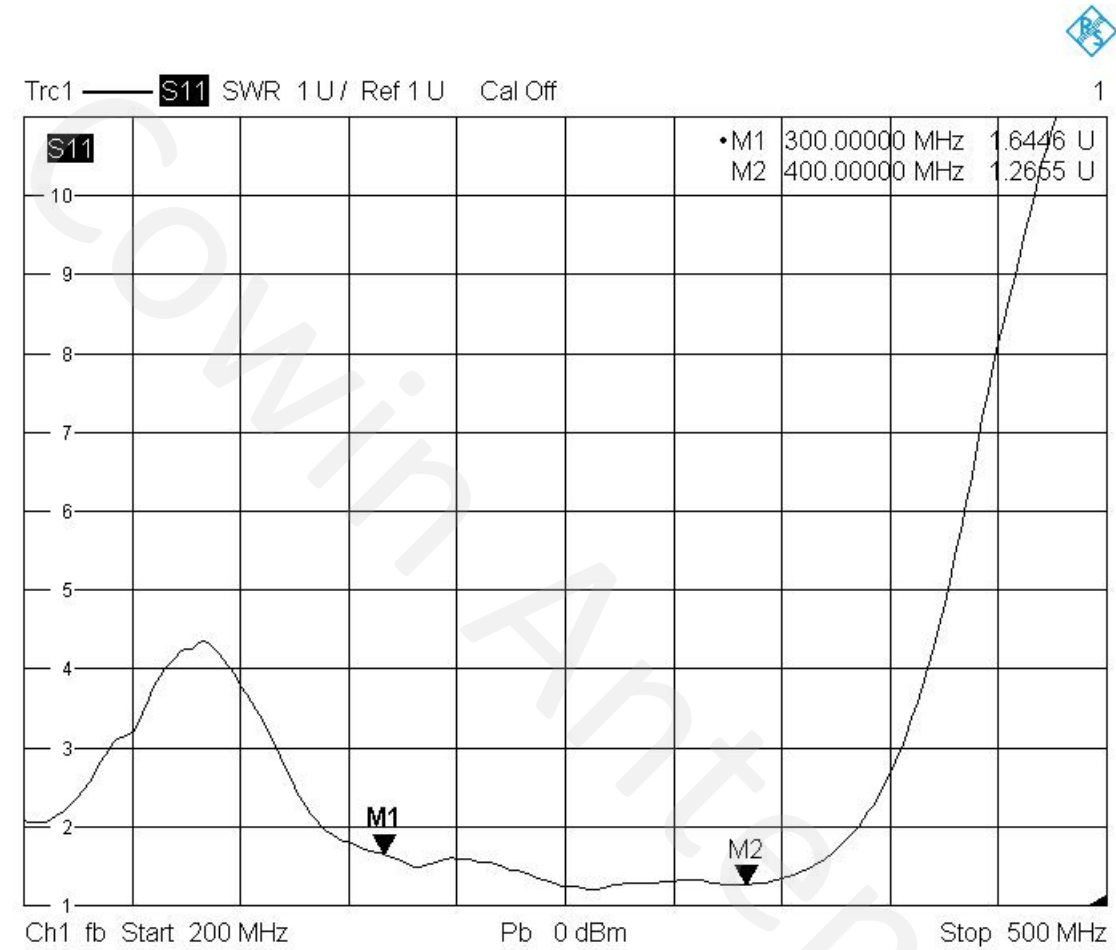
Mechanical Specifications 机械性能

Connector Type 接头类型	N Male
Connector Position 接头位置	/
Cable type 线材类型	/
Antenna Size 天线尺寸	400*20MM
Antenna Weight 天线重量	0.25KG
Radome Material 外罩材料	Glossy Gray Fiberglass
Radome Colour 外罩颜色	Gray
Mechanically Adjustable Tilt Angle 机械可调倾角	/
Temperature Range 温度	-40-85 °C
Extreme Wind Speed 极限风速	60m/s
Pole Diameter 抱杆直径	/
Mounting Method 安装方式	Used with magnetic base and other mounts
Mounting Model 安装件型号	/
Environmental Standards 环保标准	ROHS/REACH





V.S.W.R



2/6/2025, 3:04 PM