

4G LTE LPDA Antenna



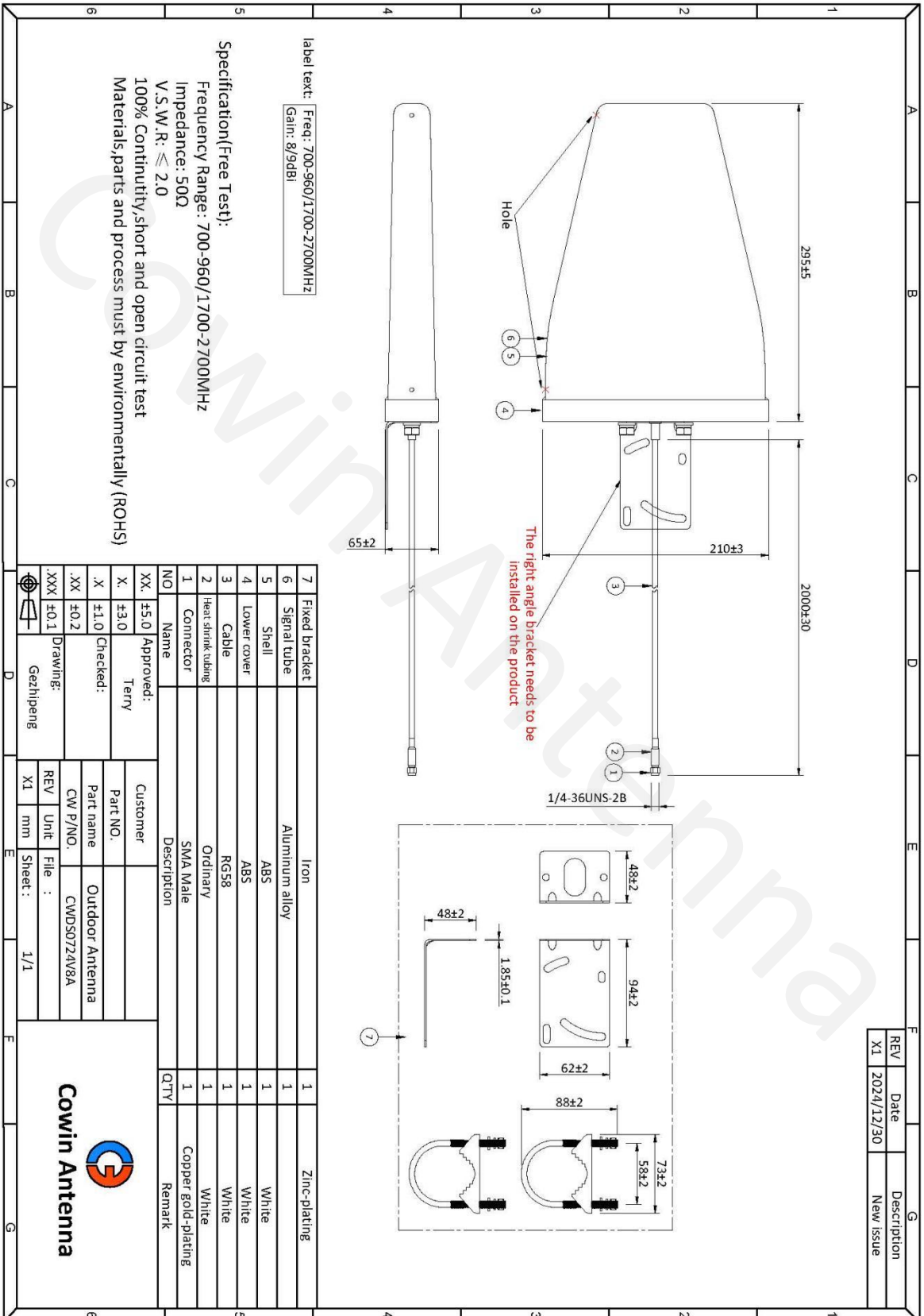
Electrical Specifications 电性指标

Part Number 料号	CWDS0724V8A
Frequency Range 频率范围	700-960/1710-2700MHz
Bandwidth 带宽	260/990MHz
Peak Gain 峰值增益	8/9dBi
Radiation Direction 辐射方向	Directional
Polarization 极化方式	Vertical
Electrical Downtilt 电下倾角	/
Beamwidths 波束宽度	E: 60°/E: 55° H: 90°/H: 70°
First Upper Sidelobe Suppression 第一上旁瓣抑制	/
Front-to-rear ratio 前后比	≥18dB
Impedance 输入阻抗	50Ω
VSWR 电压驻波比	≤ 2.0
Maximum Power 最大功率	50W
Lightning Protection 雷电保护	DC Grounding

Mechanical Specifications 机械性能

Connector Type 接头类型	SMA Male
Connector Position 接头位置	/
Cable type 线材类型	White RG58 Cable/L=2M
Antenna Size 天线尺寸	295*210*65MM
Antenna Weight 天线重量	0.9KG
Radome Material 外罩材料	/
Radome Colour 外罩颜色	White
Mechanically Adjustable Tilt Angle 机械可调倾角	/
Temperature Range 温度	-40-80℃
Extreme Wind Speed 极限风速	60m/s
Pole Diameter 抱杆直径	30-50MM
Mounting Method 安装方式	Pole Mount
Mounting Model 安装件型号	CWJM004R-1/Galvanized
Environmental Standards 环保标准	ROHS/REACH

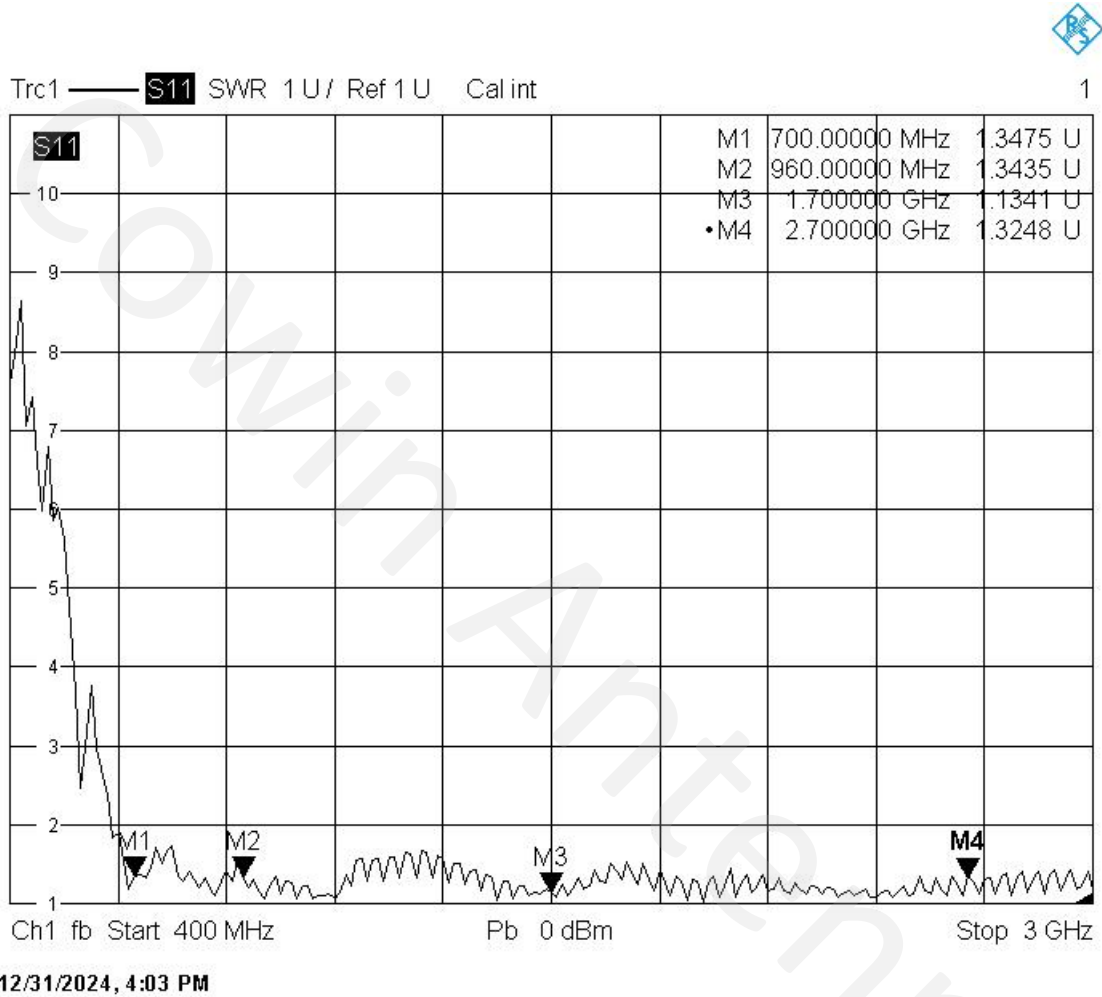




REV	Date	Description
X1	2024/12/30	New Issue



V.S.W.R



Efficiency

Frequency (MHz)	Efficiency (%)
700	79.37
800	69.42
900	83.41
960	78.28
1710	73.8
2010	86.63
2310	85.68
2700	70.46

Peak Gain

Frequency (MHz)	Max Gain (dBi)
700	6.19
800	7.22
900	8.08
960	8.46
1710	9.39
2010	9.22
2310	9.45
2700	10.77

2D Radiation Patterns

