

LPDA Antenna



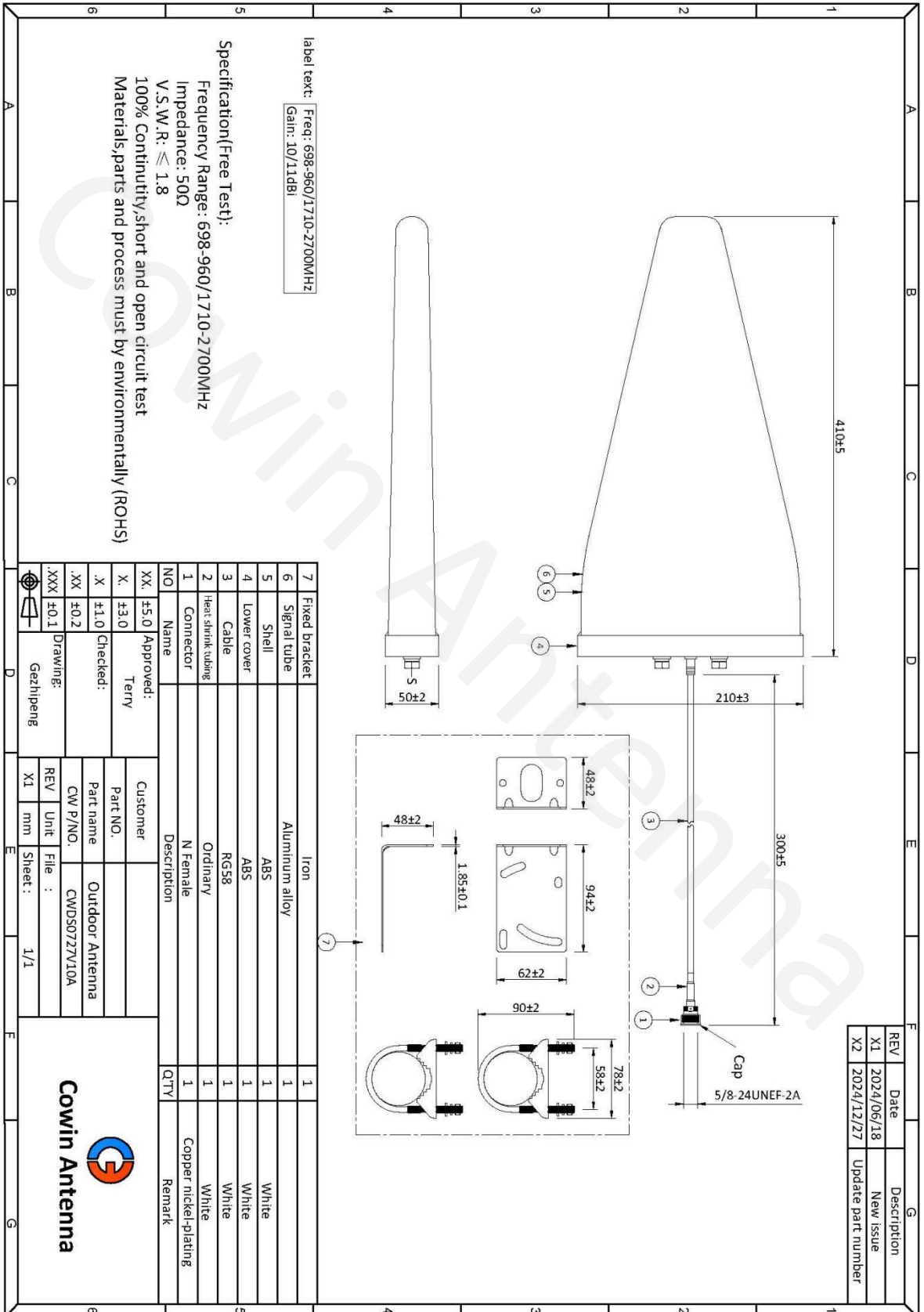
Electrical Specifications 电性指标

Part Number 料号	CWDS0727V10A
Frequency Range 频率范围	698-960/1710-2700MHz
Bandwidth 带宽	262/990MHz
Peak Gain 峰值增益	10/11dBi
Radiation Direction 辐射方向	Directional
Polarization 极化方式	Vertical
Electrical Downtilt 电下倾角	/
Beamwidth 波束宽度	E: 55°/E: 50° H: 75°/H: 65°
First Upper Sidelobe Suppression 第一上旁瓣抑制	/
Front-to-rear ratio 前后比	≥18dB
Impedance 输入阻抗	50Ω
VSWR 电压驻波比	≤1.8
Maximum Power 最大功率	50W
Lightning Protection 雷电保护	DC Grounding

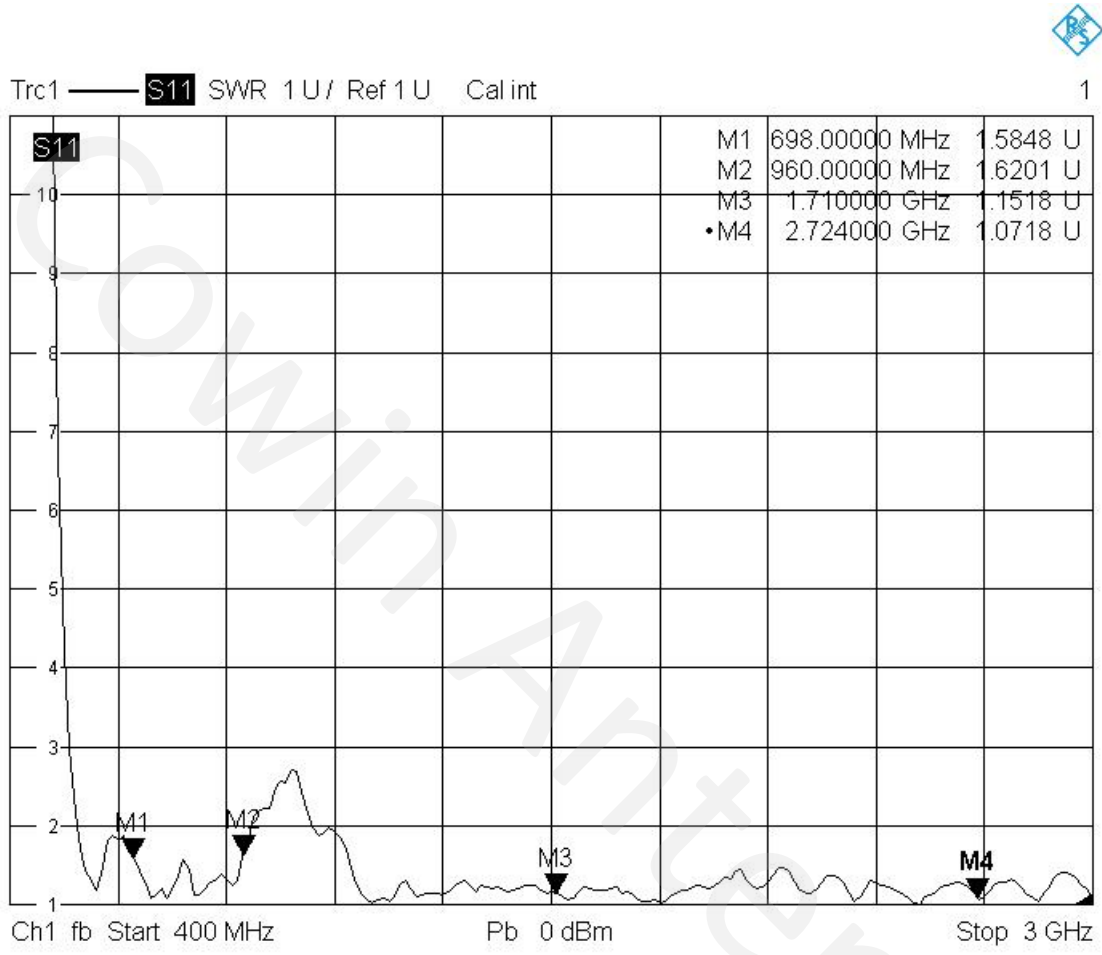
Mechanical Specifications 机械性能

Connector Type 接头类型	N Female
Connector Position 接头位置	/
Cable type 线材类型	White RG58 Cable/L=30CM
Antenna Size 天线尺寸	410*210*50MM
Antenna Weight 天线重量	1KG
Radome Material 外罩材料	/
Radome Colour 外罩颜色	White
Mechanically Adjustable Tilt Angle 机械可调倾角	/
Temperature Range 温度	-40-80℃
Extreme Wind Speed 极限风速	60m/s
Pole Diameter 抱杆直径	30-50MM
Mounting Method 安装方式	Pole Mount
Mounting Model 安装件型号	CWJM004M/Galvanized
Environmental Standards 环保标准	ROHS/REACH





V.S.W.R



12/20/2024, 11:39 AM

Peak Gain

Frequency (MHz)	Max Gain (dBi)
698	9.26
798	9.88
898	9.59
960	9.97
1710	10.61
1900	10.35
2100	10.51
2300	10.43
2500	10.28
2700	10.93

2D Radiation Patterns

