

2.4/5.8G Panel MiMO Antenna



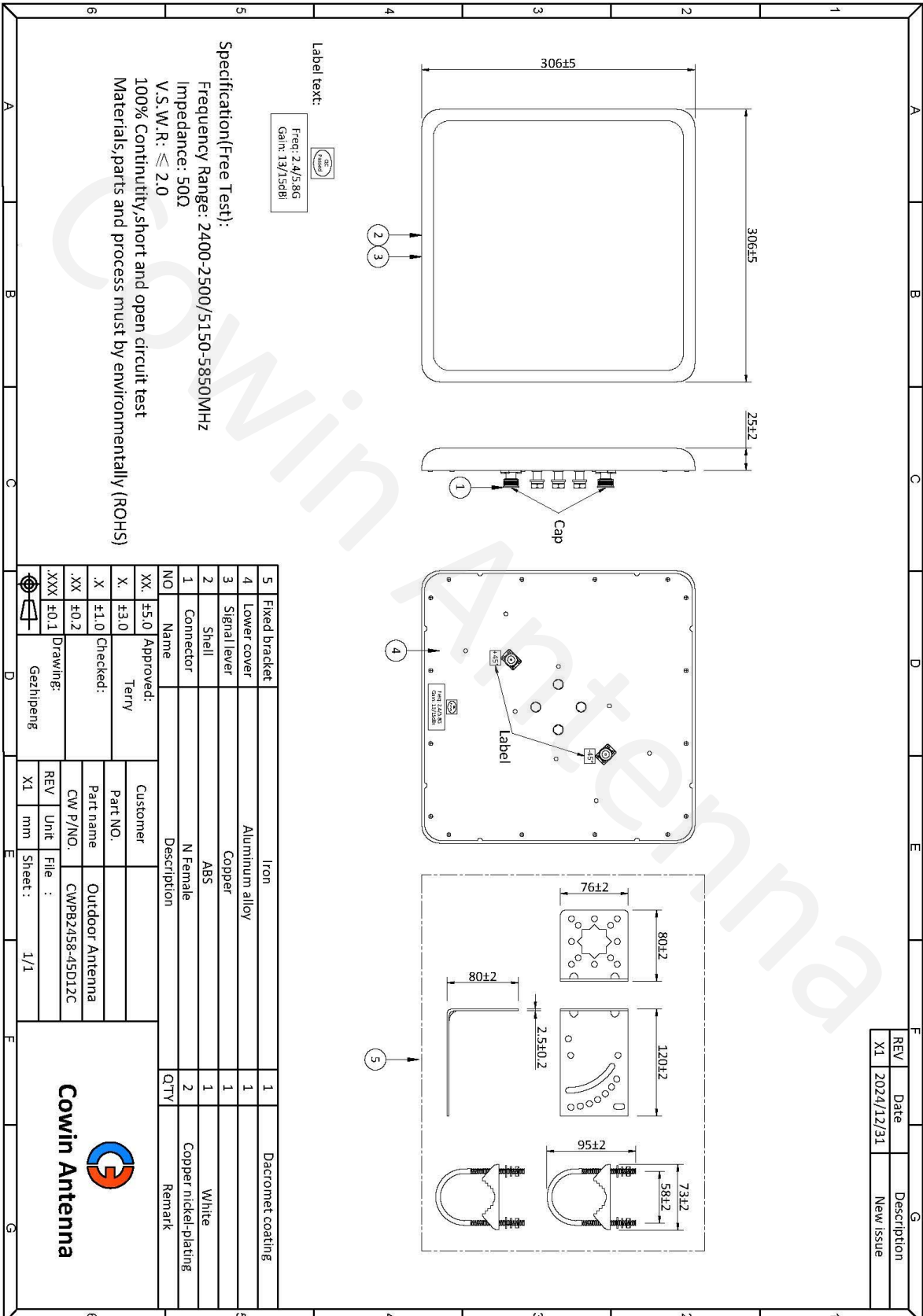
Electrical Specifications 电性指标

Part Number 料号	CWPB2458-45D12C
Frequency Range 频率范围	2400-2500/4900-5850MHz
Bandwidth 带宽	100/950MHz
Peak Gain 峰值增益	13/15dBi
Radiation Direction 辐射方向	Directional
Polarization 极化方式	±45
Electrical Downtilt 电下倾角	0
Half Power Beamwidths 半功率波瓣宽度	H: 45°/H: 26° V: 43°/V: 25°
First Upper Sidelobe Suppression 第一上旁瓣抑制	/
Front-to-rear ratio 前后比	≥25dB
Impedance 输入阻抗	50Ω
VSWR 电压驻波比	≤2.0
Maximum Power 最大功率	50W
Lightning Protection 雷电保护	DC Grounding

Mechanical Specifications 机械性能

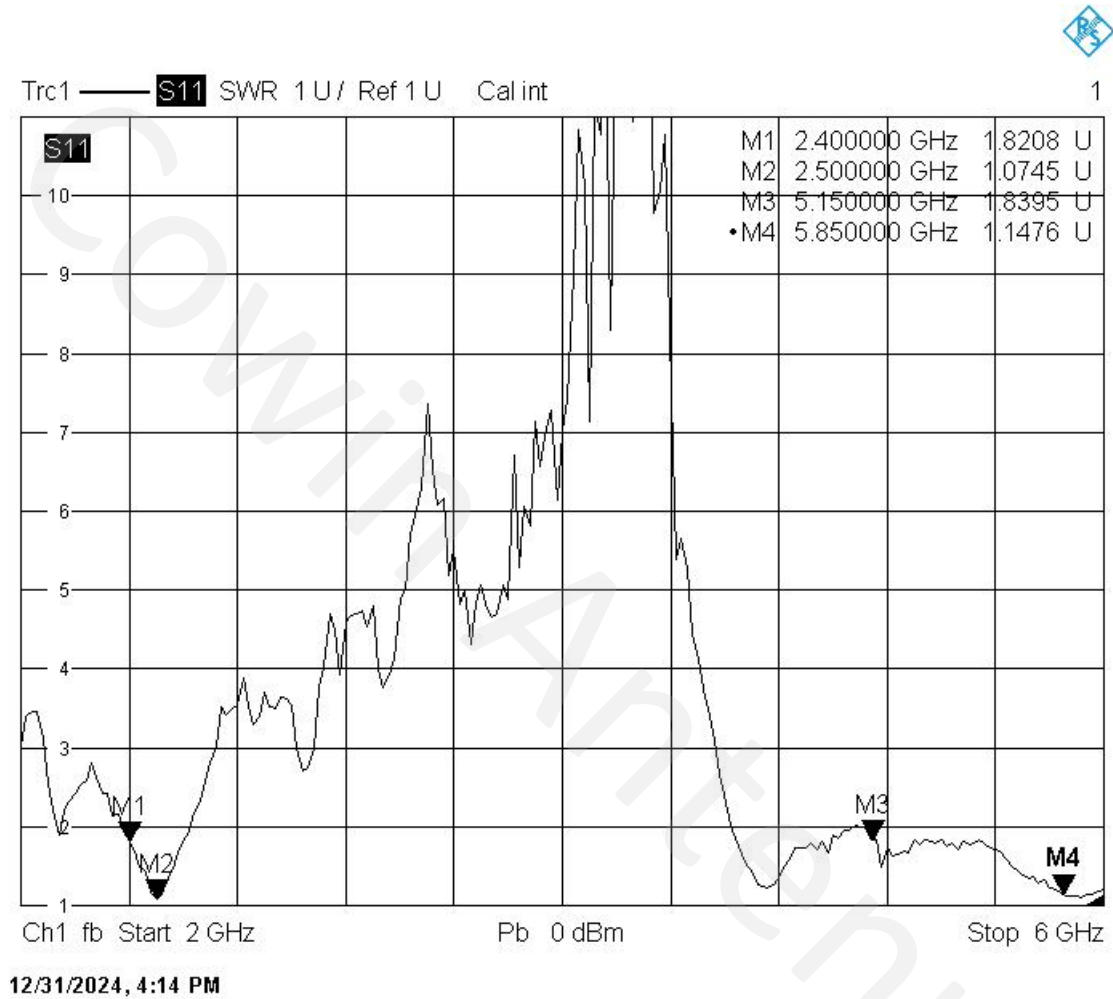
Connector Type 接头类型	2*N Female
Connector Position 接头位置	Back
Cable type 线材类型	/
Antenna Size 天线尺寸	306*306*25MM
Antenna Weight 天线重量	1.4KG
Radome Material 外罩材料	ABS
Radome Colour 外罩颜色	White
Mechanically Adjustable Tilt Angle 机械可调倾角	0-60°
Temperature Range 温度	-40-60℃
Extreme Wind Speed 极限风速	60m/s
Pole Diameter 抱杆直径	35-50MM
Mounting Method 安装方式	Pole Mount
Mounting Model 安装件型号	/
Environmental Standards 环保标准	ROHS/REACH



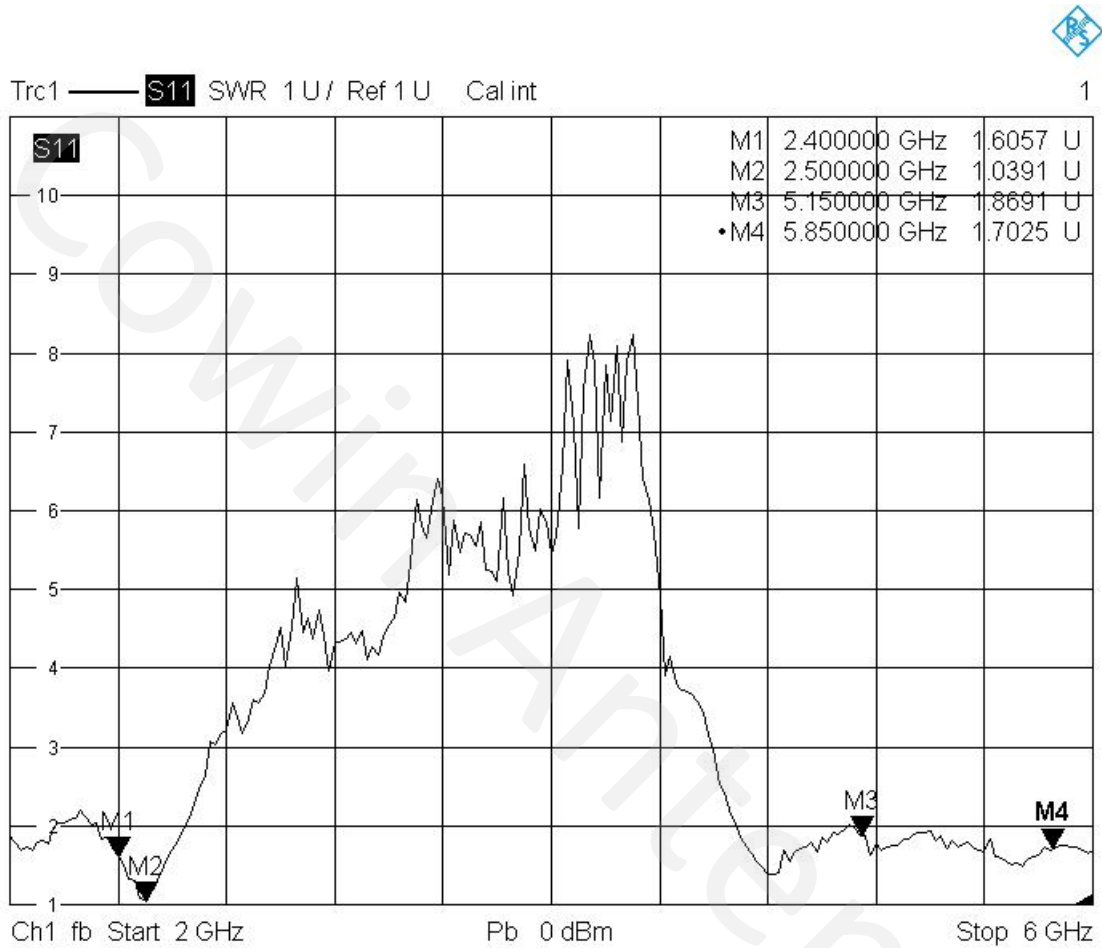


REV	Date	Description
X1	2024/12/31	New issue

V.S.W.R (+45)



V.S.W.R (-45)



12/31/2024, 4:13 PM

Efficiency (+45)

Frequency (MHz)	Efficiency (%)
2400	72.99
2450	70.2
2500	78.36
5150	76.17
5350	73.23
5500	74.65
5850	66.14

Efficiency (-45)

Frequency (MHz)	Efficiency (%)
2400	72.28
2450	71.06
2500	76.91
5150	78.21
5350	72.98
5500	74.12
5850	73.04

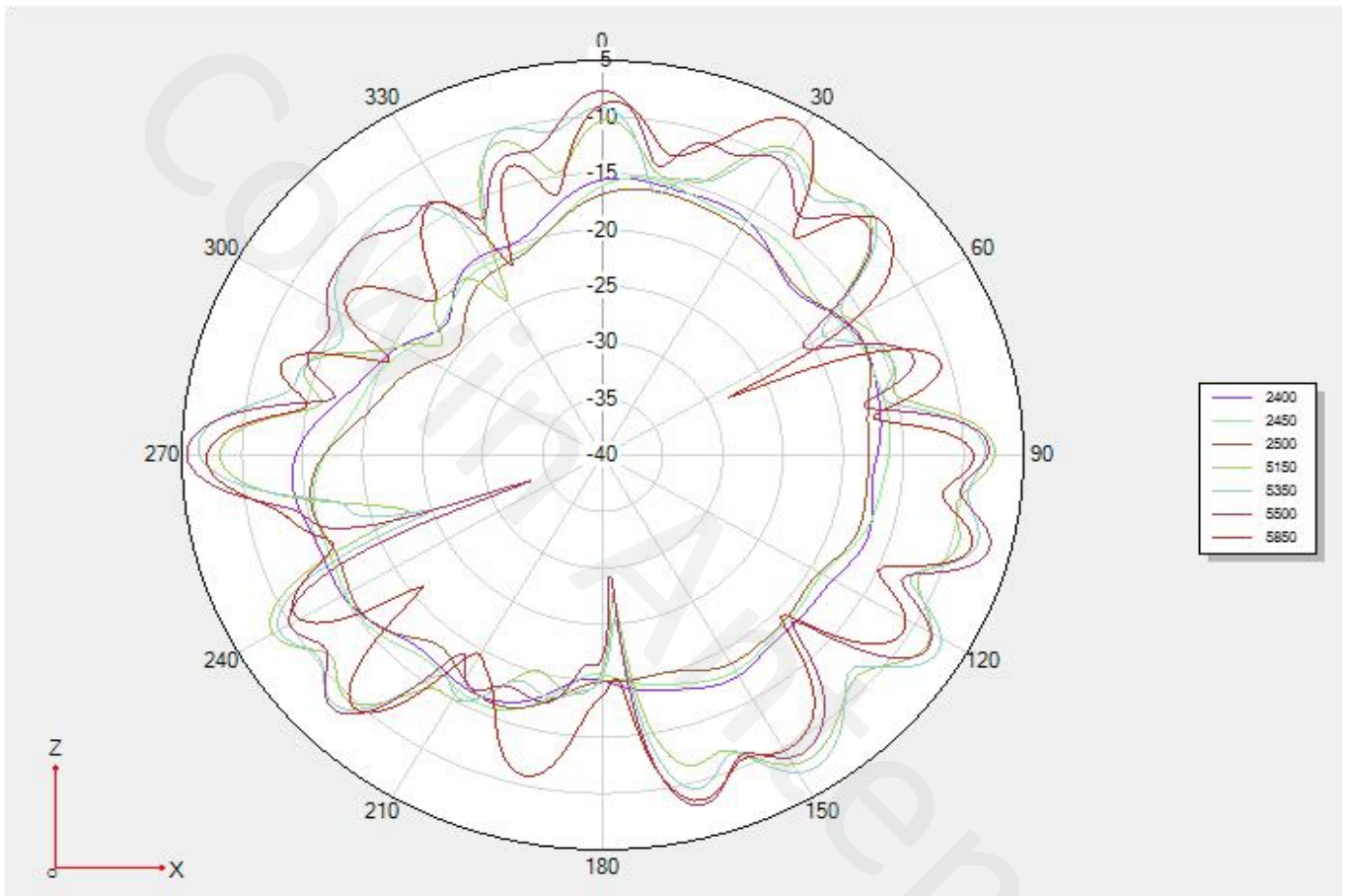
Peak Gain (+45)

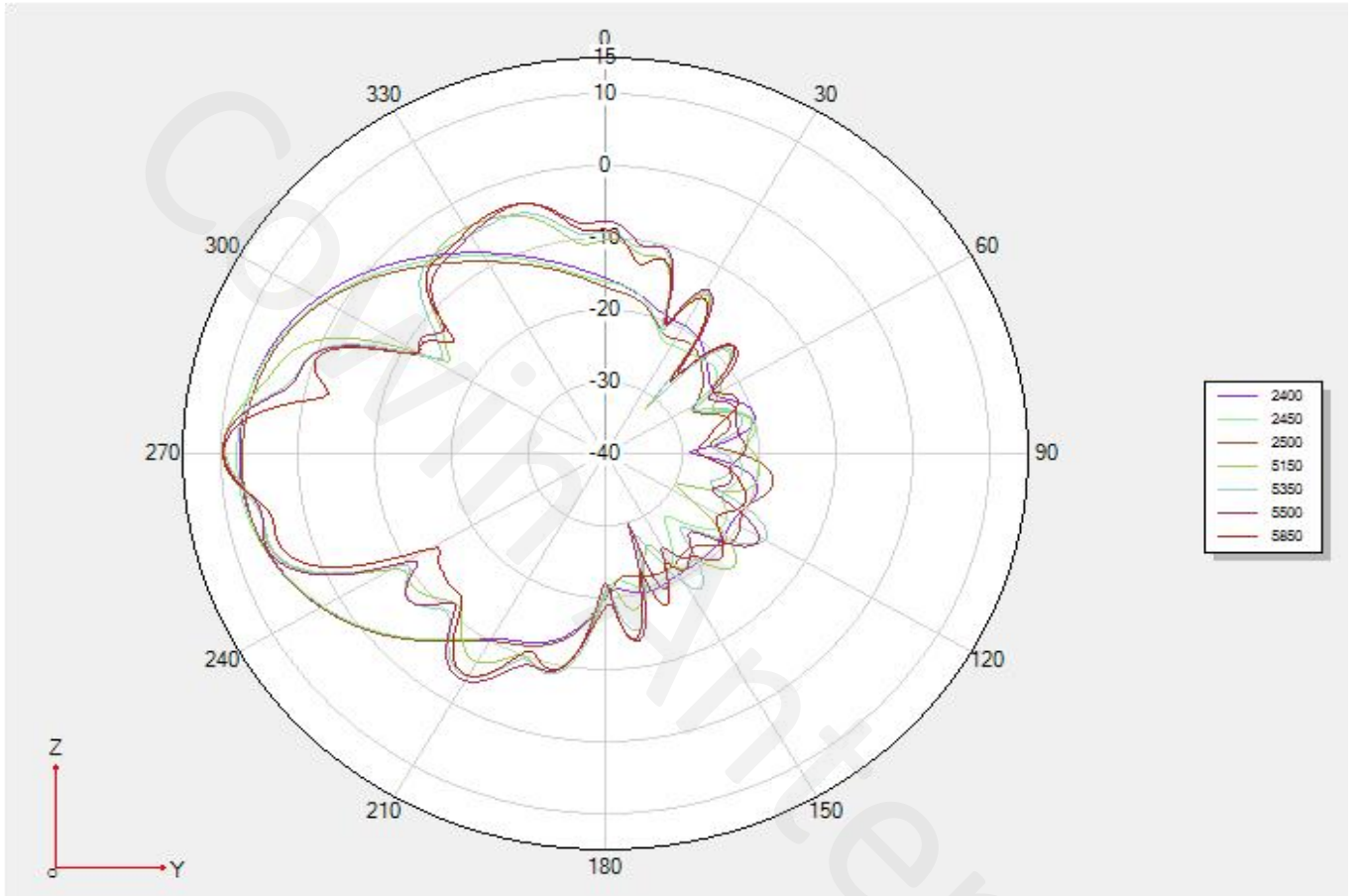
Frequency (MHz)	Max Gain (dBi)
2400	12.65
2450	12.95
2500	13.32
5150	13.71
5350	13.83
5500	14.76
5850	14.72

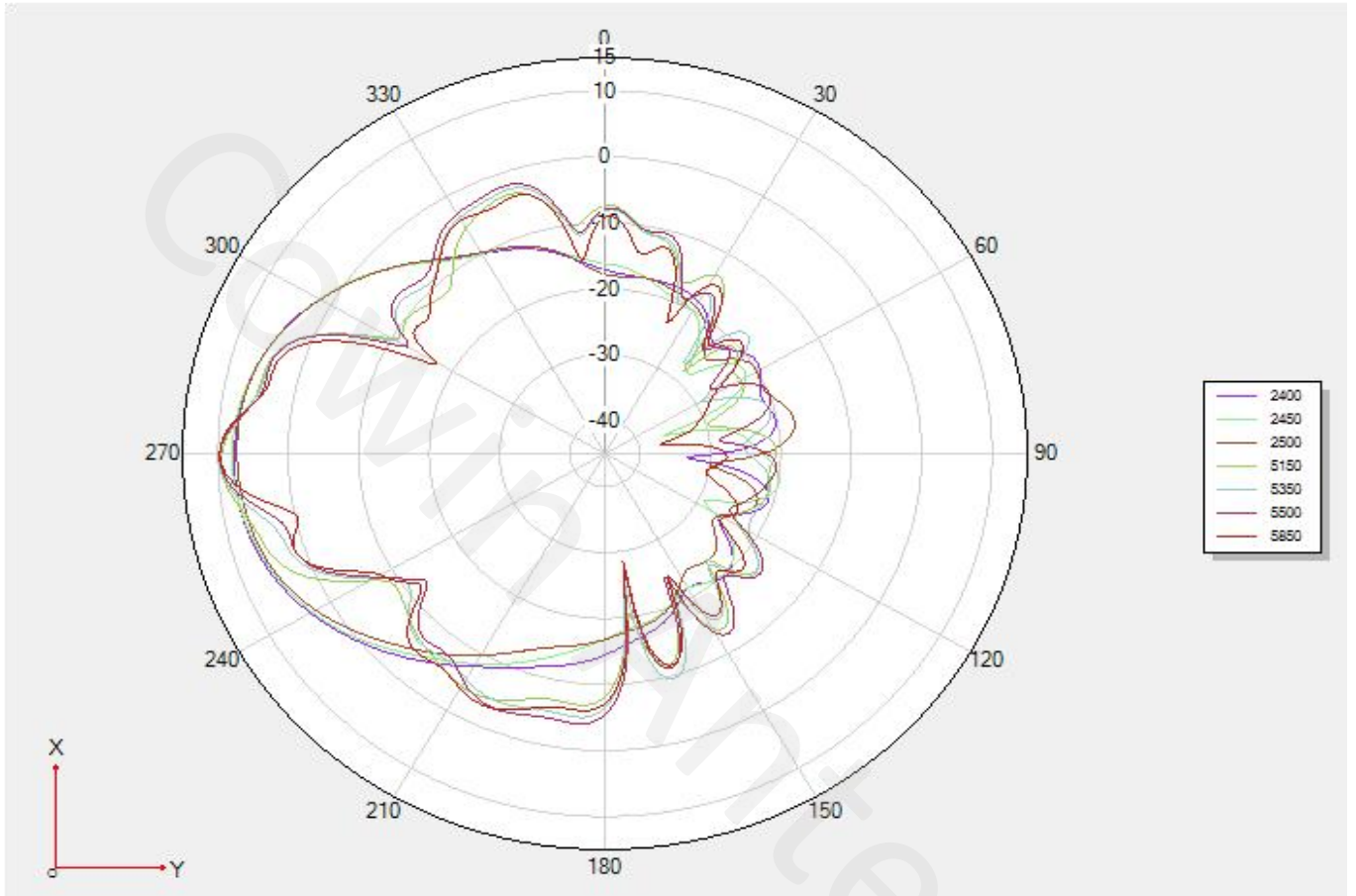
Peak Gain (-45)

Frequency (MHz)	Max Gain (dBi)
2400	12.09
2450	12.44
2500	13.75
5150	13.59
5350	13.62
5500	14.68
5850	14.53

2D Radiation Patterns (+45)







2D Radiation Patterns (-45)

