

Omnidirectional PVC Antenna



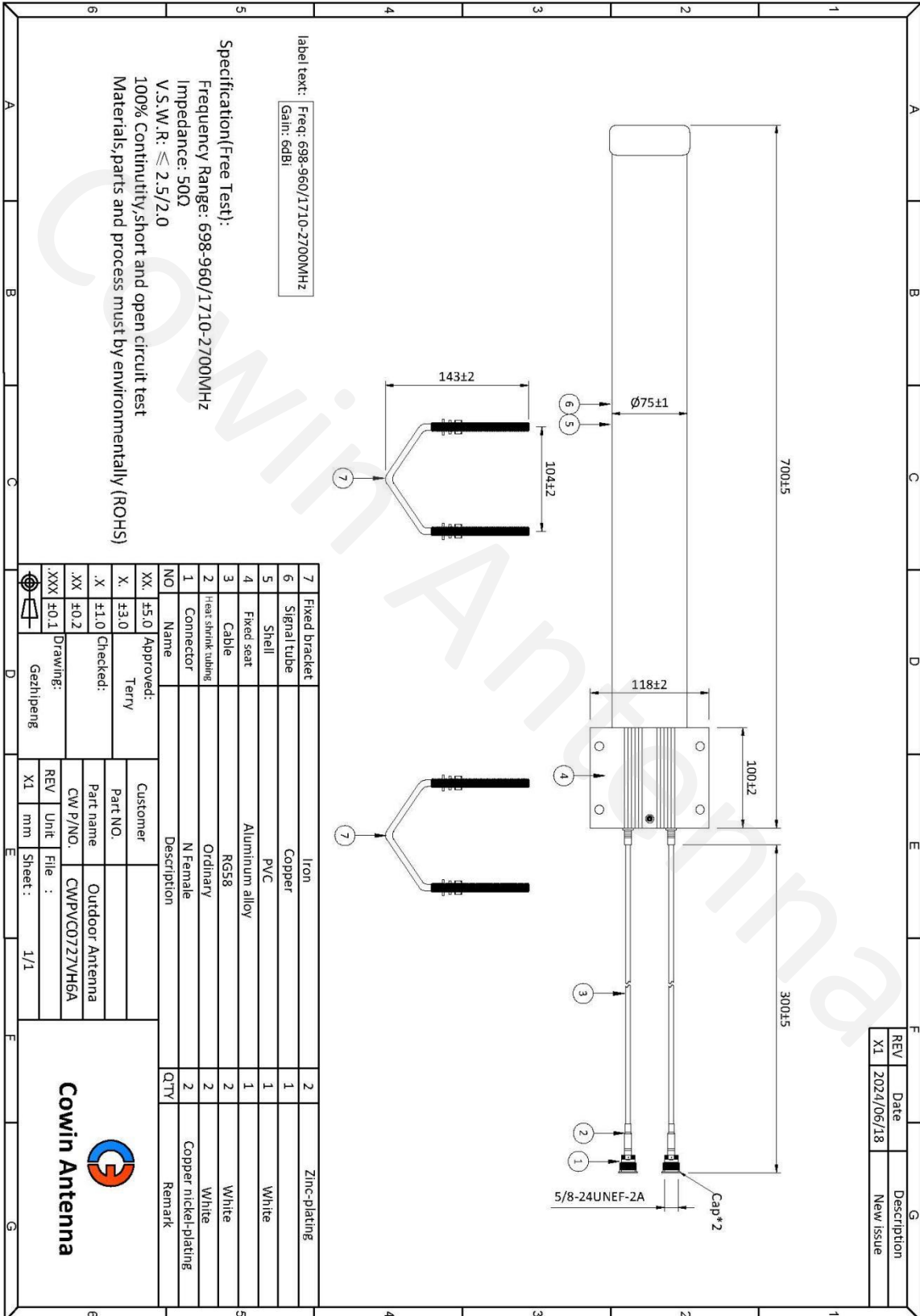
Electrical Specifications 电性指标

Part Number 料号	CWPVC0727VH6A
Frequency Range 频率范围	698-960/1710-2700MHz
Bandwidth 带宽	262/990MHz
Peak Gain 峰值增益	6±1dBi
Radiation Direction 辐射方向	Omnidirectional
Polarization 极化方式	Vertical/Horizontal
Electrical Downtilt 电下倾角	/
Half Power Beamwidths 半功率波瓣宽度	/
First Upper Sidelobe Suppression 第一上旁瓣抑制	/
Front-to-rear ratio 前后比	/
Impedance 输入阻抗	50Ω
VSWR 电压驻波比	≤2.5/2.0
Maximum Power 最大功率	50W
Lightning Protection 雷电保护	DC Grounding

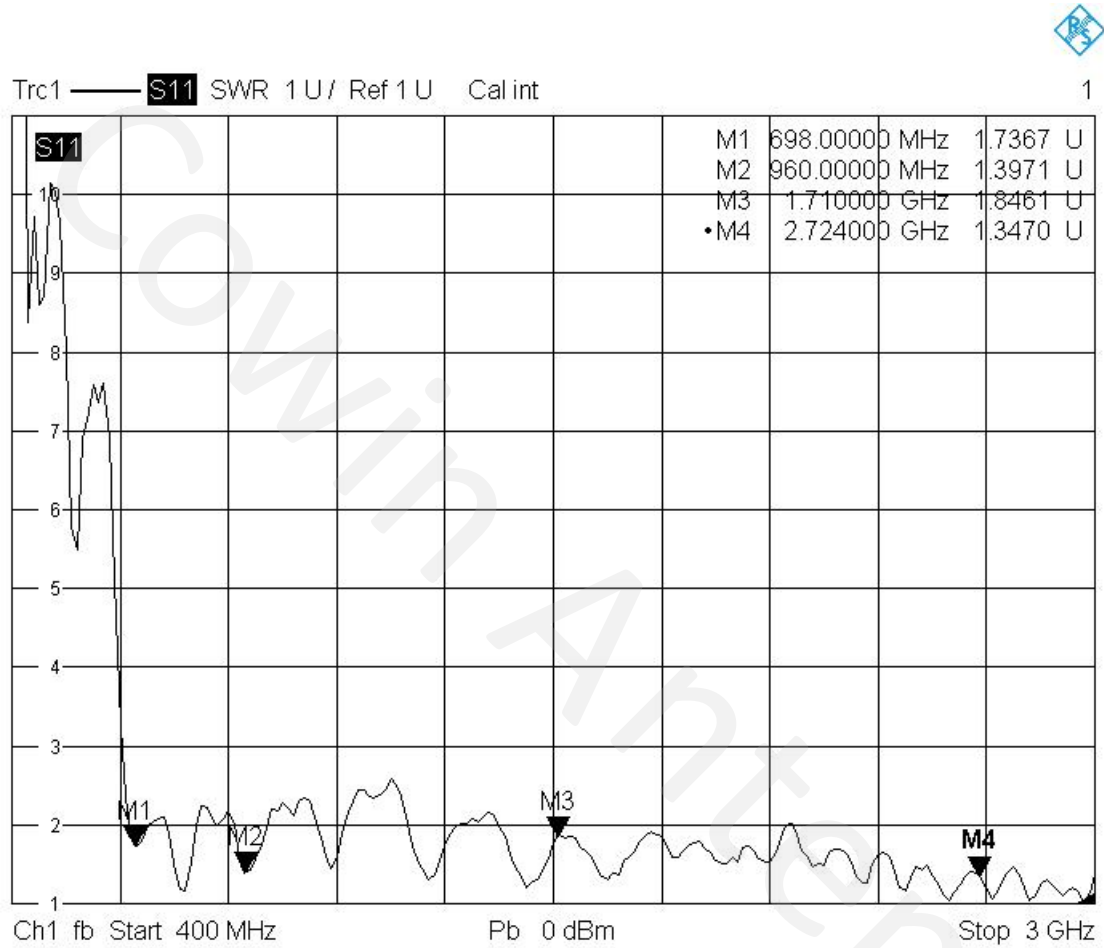
Mechanical Specifications 机械性能

Connector Type 接头类型	2*N Female
Connector Position 接头位置	/
Cable type 线材类型	2*White RG58 Cable/L=30CM
Antenna Size 天线尺寸	700*75MM
Antenna Weight 天线重量	2KG
Radome Material 外罩材料	PVC
Radome Colour 外罩颜色	White
Mechanically Adjustable Tilt Angle 机械可调倾角	/
Temperature Range 温度	-40-80℃
Extreme Wind Speed 极限风速	60m/s
Pole Diameter 抱杆直径	40-90MM
Mounting Method 安装方式	Pole Mount
Mounting Model 安装件型号	CWBLG24VH10A/Aluminum profile sandblasting oxidation
Environmental Standards 环保标准	ROHS/REACH





V.S.W.R (V)



12/20/2024, 11:42 AM

V.S.W.R (H)



12/20/2024, 11:46 AM

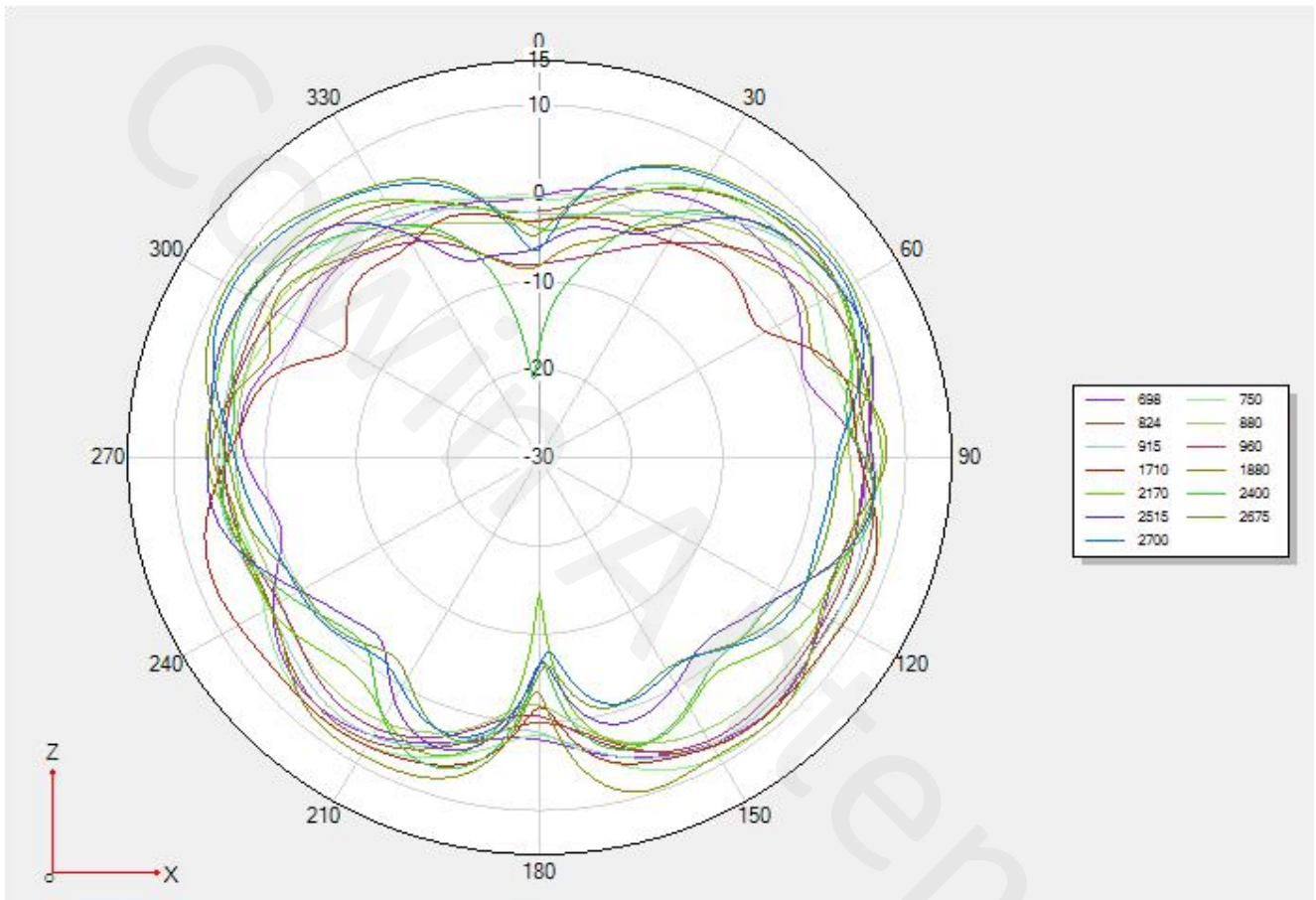
Peak Gain (V)

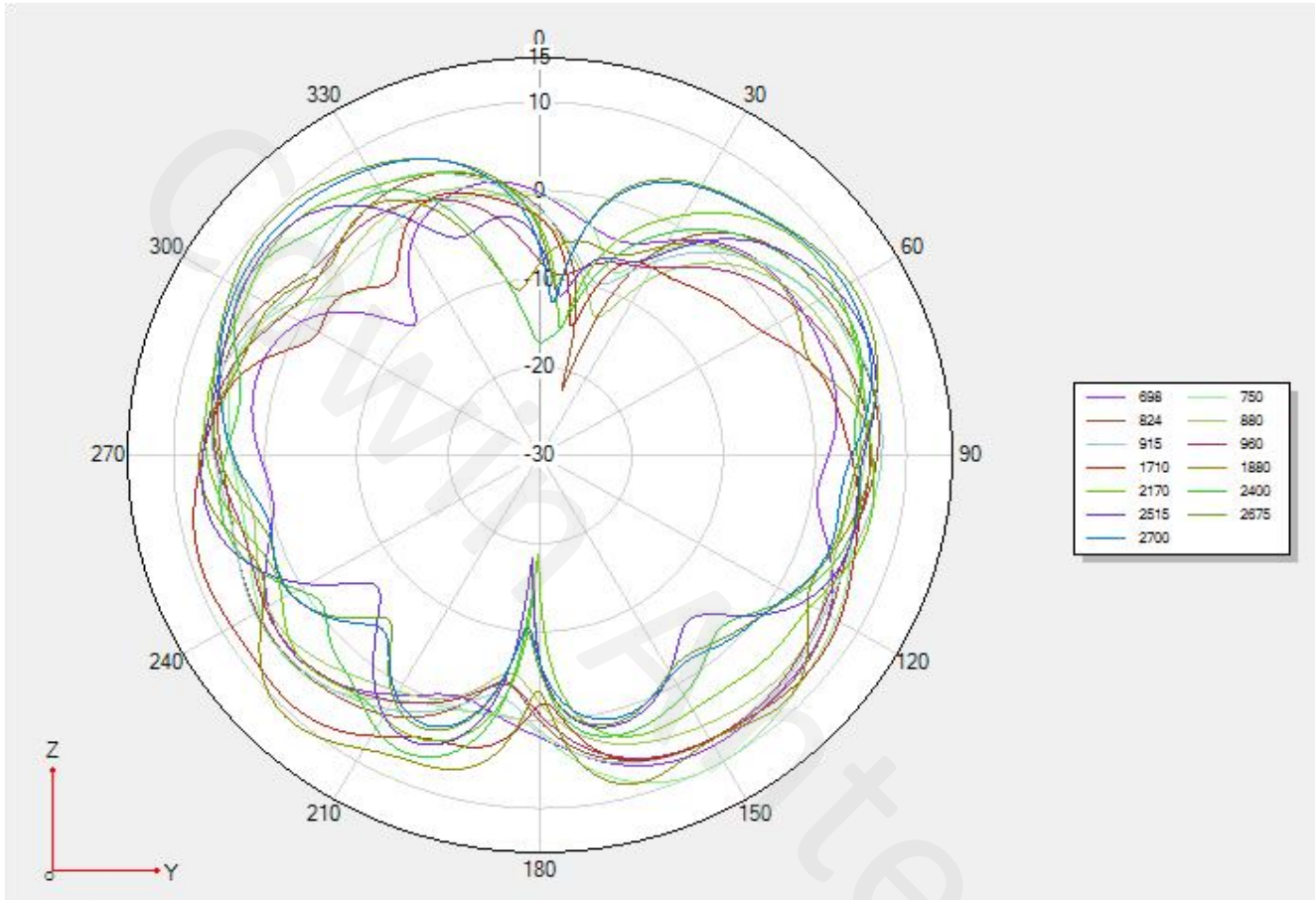
Frequency (MHz)	Max Gain (dBi)
698	4.78
750	4.15
824	4.51
880	4.47
915	4.03
960	4.22
1710	5.22
1880	5.73
2170	5.37
2400	5.09
2515	5.87
2675	5.11
2700	5.66

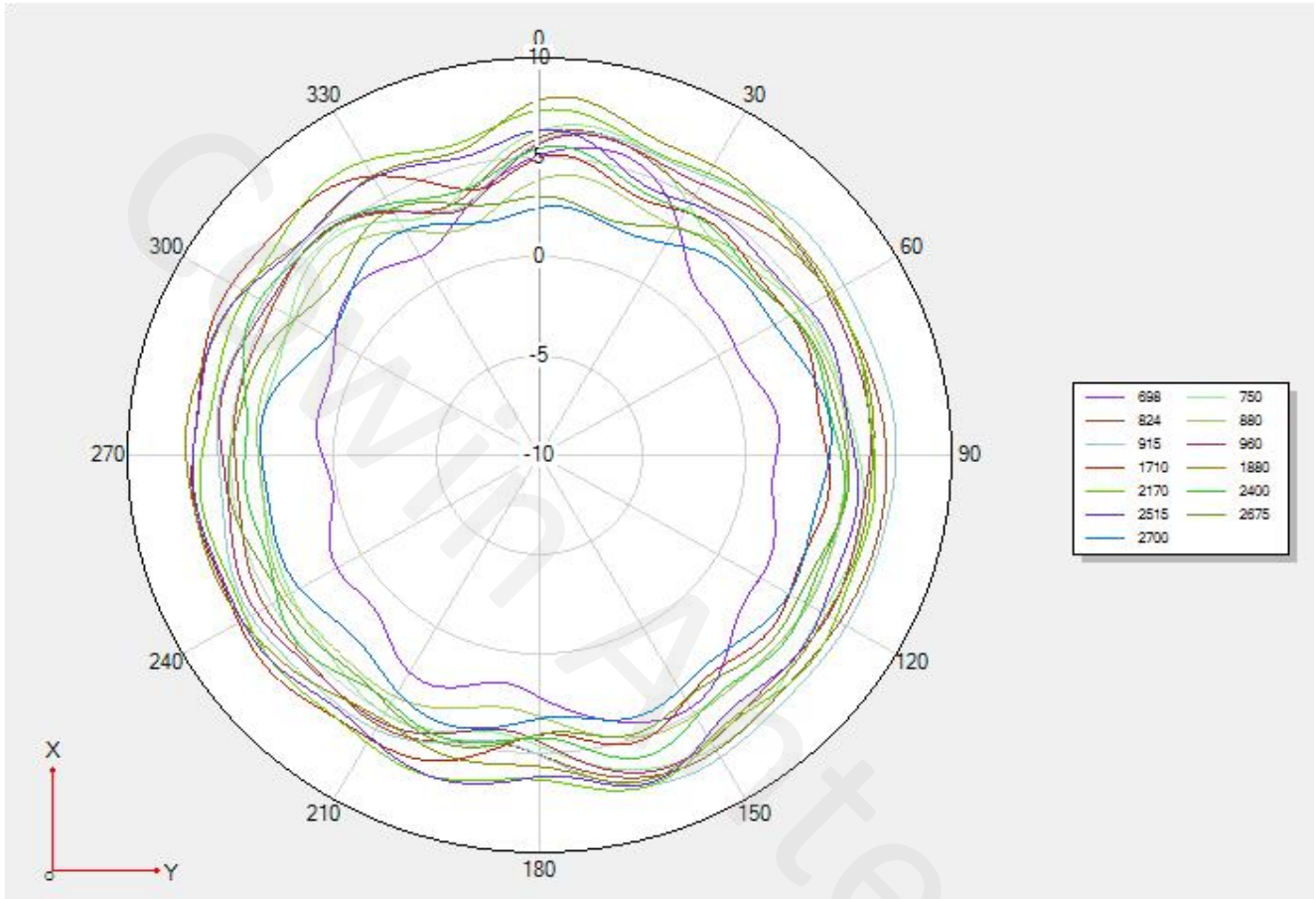
Peak Gain (H)

Frequency (MHz)	Max Gain (dBi)
698	4.51
750	4.88
824	4.68
880	4.01
915	4.48
960	4.61
1710	5.71
1880	5.39
2170	5.48
2400	5.17
2515	5.99
2675	5.54
2700	5.33

2D Radiation Patterns (V)







2D Radiation Patterns (H)

