

2.4G Omni PVC Antenna



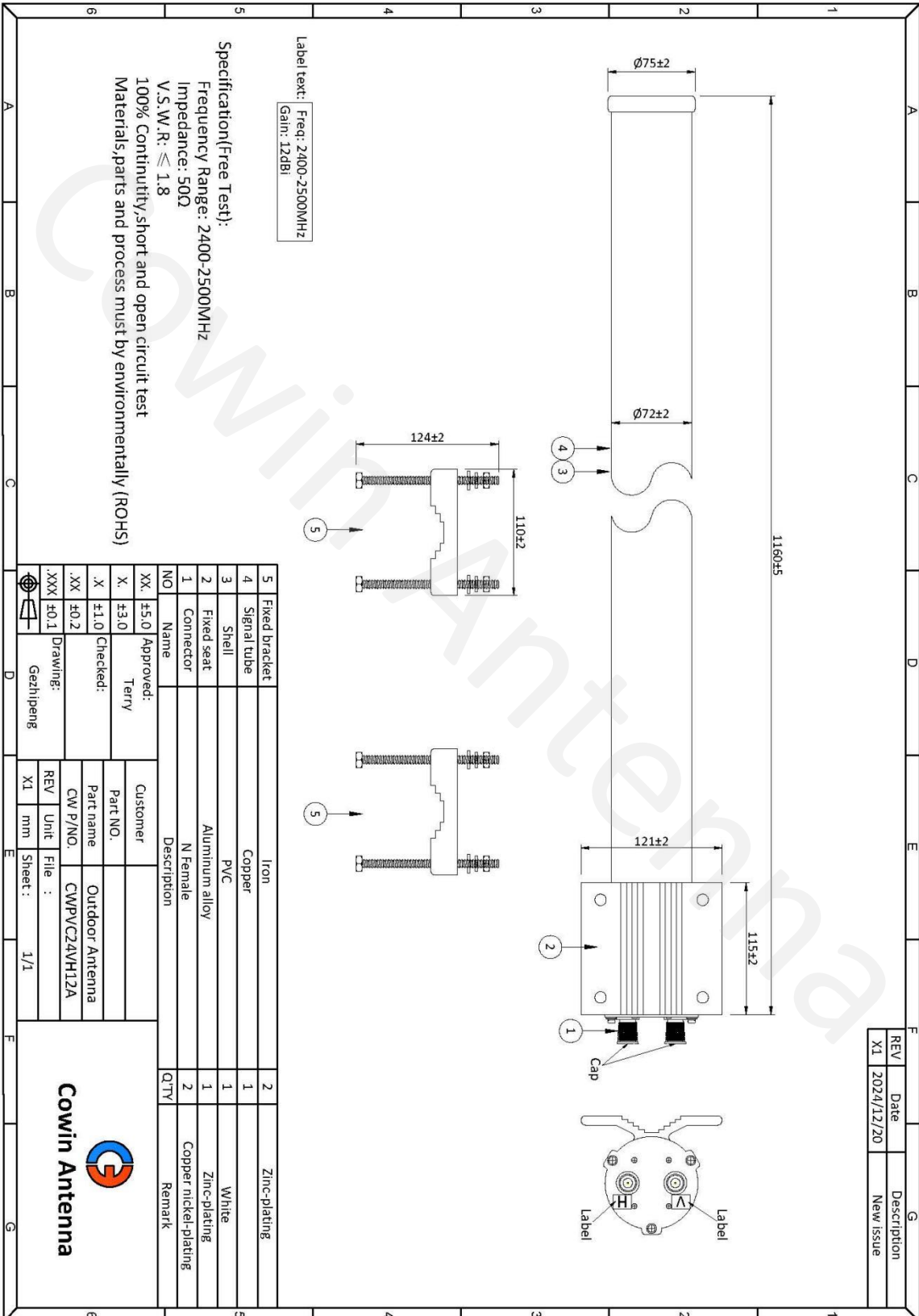
Electrical Specifications 电性指标

Part Number 料号	CWPVC24VH12A
Frequency Range 频率范围	2400-2500MHz
Bandwidth 带宽	100MHz
Peak Gain 峰值增益	12 ± 1dBi
Radiation Direction 辐射方向	Omni
Polarization 极化方式	Vertical /Horizontal
Electrical Downtilt 电下倾角	/
Half Power Beamwidths 半功率波瓣宽度	/
First Upper Sidelobe Suppression 第一上旁瓣抑制	/
Impedance 输入阻抗	50Ω
VSWR 电压驻波比	≤ 1.8
Maximum Power 最大功率	50W
Lightning Protection 雷电保护	DC Grounding

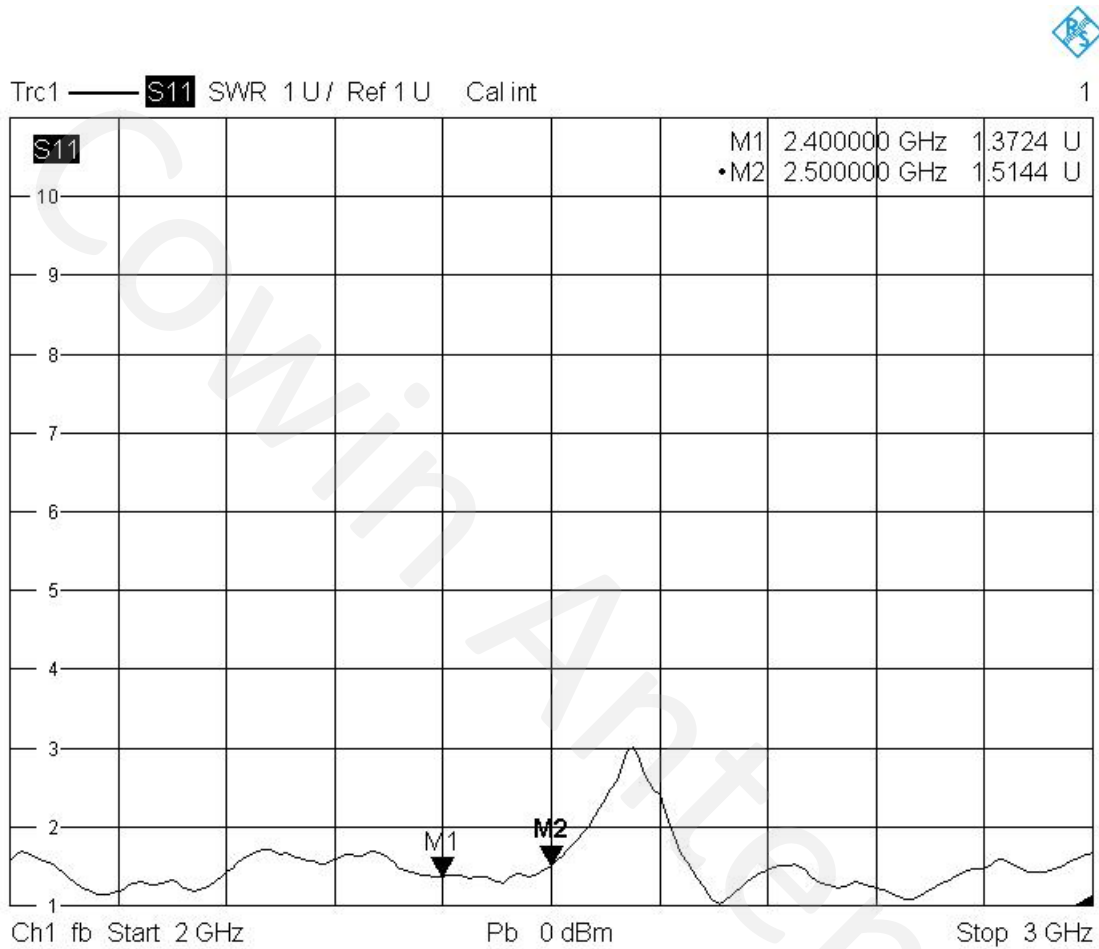
Mechanical Specifications 机械性能

Connector Type 接头类型	2*N Female
Connector Position 接头位置	Bottom
Cable type 线材类型	/
Antenna Size 天线尺寸	1160*72MM
Antenna Weight 天线重量	2.6KG
Radome Material 外罩材料	PVC
Radome Colour 外罩颜色	White
Mechanically Adjustable Tilt Angle 机械可调倾角	/
Temperature Range 温度	-40~80℃
Extreme Wind Speed 极限风速	60m/s
Pole Diameter 抱杆直径	40-90MM
Mounting Method 安装方式	Pole mount
Mounting Model 安装件型号	CWBLG24VH10A
Environmental Standards 环保标准	ROHS/REACH



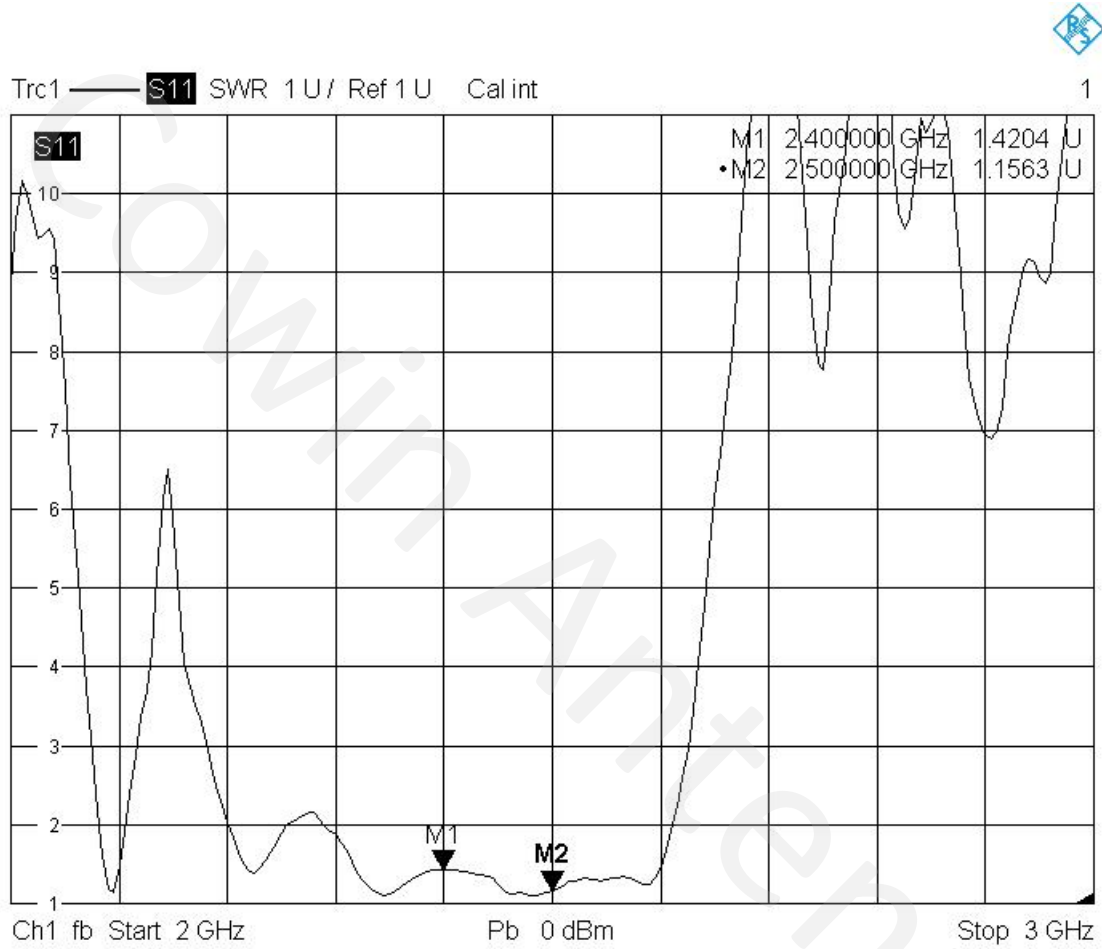


V.S.W.R (V)



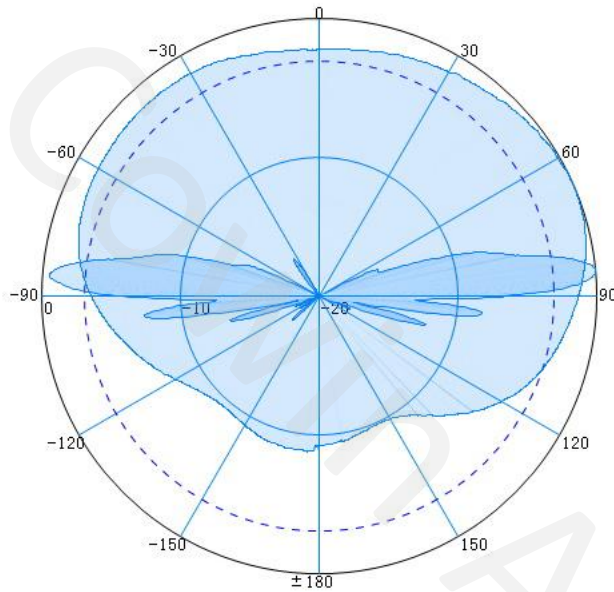
12/21/2024, 11:35 AM

V.S.W.R (H)



12/21/2024, 11:36 AM

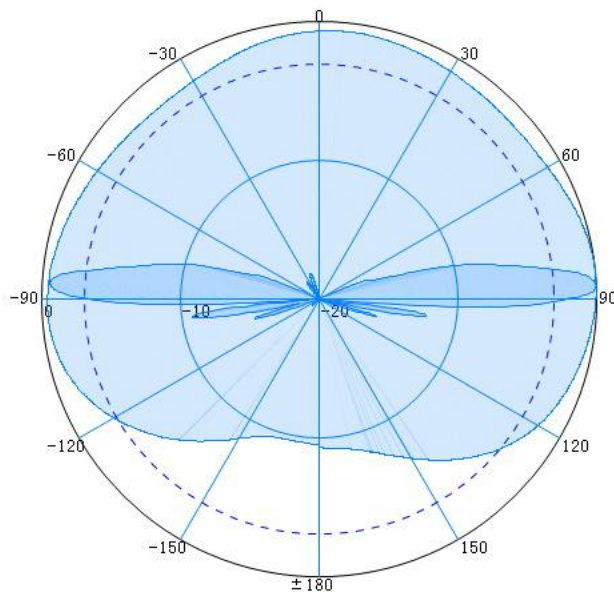
2D Radiation Patterns (V)



Test frequency: 2400MHz
 Primary polarization:
 Primary polarization
 Polarization: Horizontal
 Peak level: -17.29dB
 3dB width: 8.22°
 Pattern roundness: 22.35

Test frequency: 2400MHz
 Primary polarization:
 Primary polarization
 Polarization: Vertical
 Peak level: -29.07dB
 3dB width: 193.16°
 Pattern roundness: 5.34

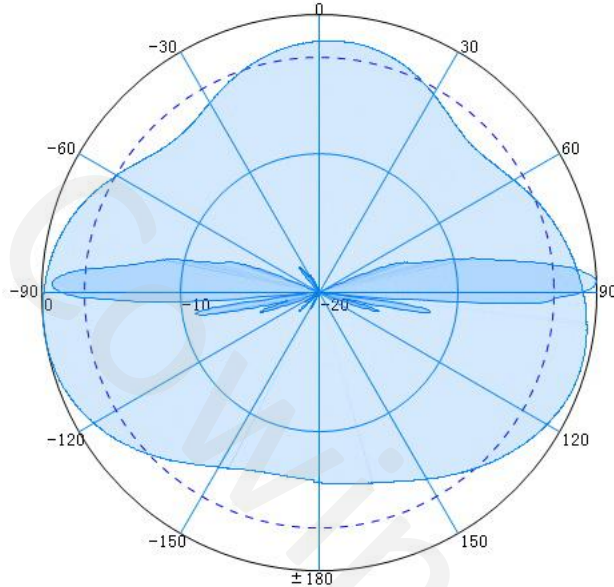
Gain: 11.00dBi



Test frequency: 2450MHz
 Primary polarization:
 Primary polarization
 Polarization: Vertical
 Peak level: -23.31dB
 3dB width: 224.46°
 Pattern roundness: 6.45

Test frequency: 2450MHz
 Primary polarization:
 Primary polarization
 Polarization: Horizontal
 Peak level: -16.50dB
 3dB width: 7.73°
 Pattern roundness: 22.75

Gain: 11.02dBi

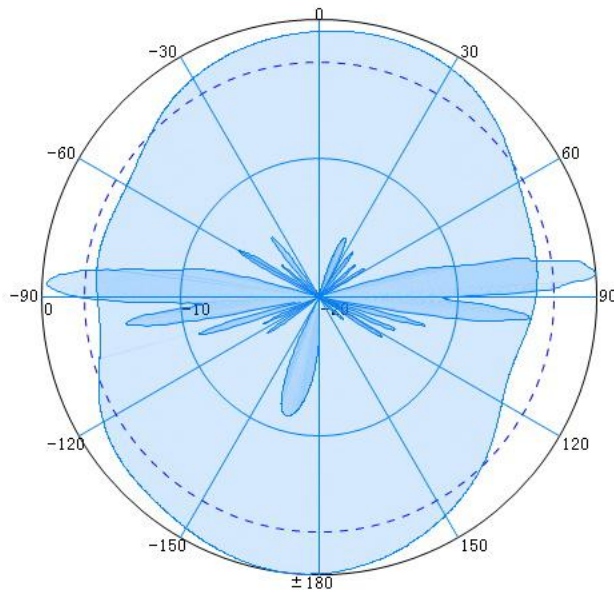


Test frequency: 2500MHz
 Primary polarization:
 Polarization: Horizontal
 Peak level: -20.03dB
 3dB width: 8.15°
 Pattern roundness: 27.83

Test frequency: 2500MHz
 Primary polarization:
 Polarization: Vertical
 Peak level: -23.53dB
 3dB width: 71.86°
 Pattern roundness: 3.43

Gain: 11.84dBi

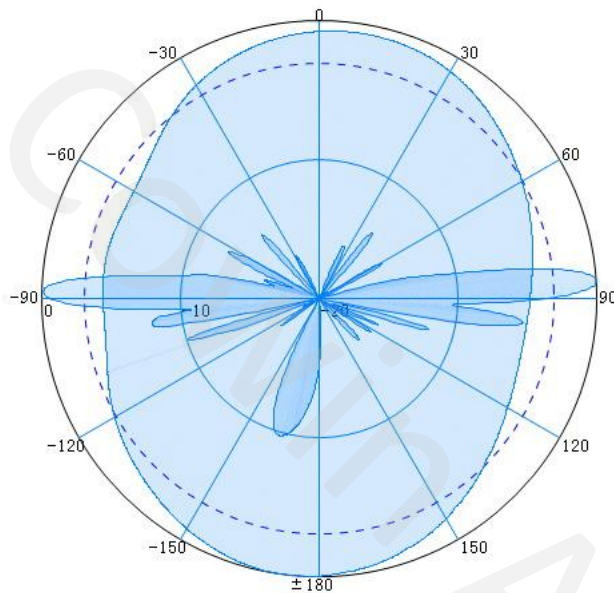
2D Radiation Patterns (H)



Test frequency: 2400MHz
 Primary polarization:
 Polarization: Vertical
 Peak level: -22.40dB, 175
 3dB width: 6.80°
 Pattern roundness: 27.60

Test frequency: 2400MHz
 Primary polarization:
 Polarization: Horizontal
 Peak level: -26.73dB
 3dB width: 112.14°
 Pattern roundness: 2.88

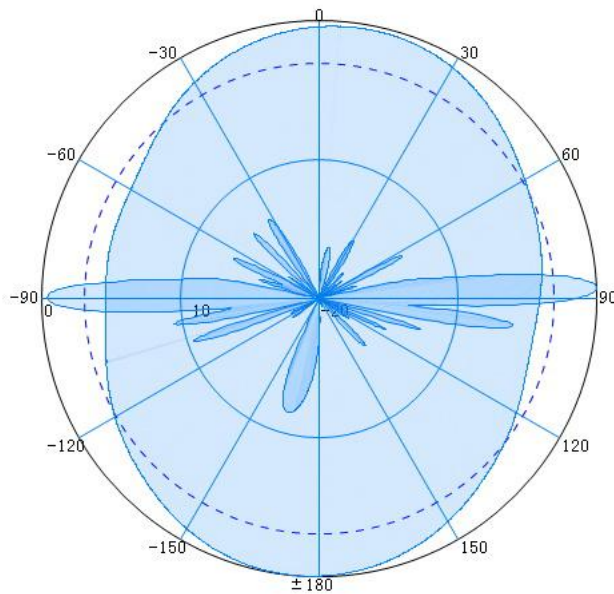
Gain: 11.63dBi



Test frequency: 2450MHz
 Primary polarization:
 Polarization: Vertical
 Peak level: -22.53dB
 3dB width: 6.83°
 Pattern roundness: 20.83

Test frequency: 2450MHz
 Primary polarization:
 Polarization: Horizontal
 Peak level: -21.48dB
 3dB width: 103.88°
 Pattern roundness: 2.51

Gain: 11.70dBi



Test frequency: 2500MHz
 Primary polarization:
 Polarization: Vertical
 Peak level: -25.43dB
 3dB width: 6.46°
 Pattern roundness: 18.91

Test frequency: 2500MHz
 Primary polarization:
 Polarization: Horizontal
 Peak level: -22.55dB
 3dB width: 110.85°
 Pattern roundness: 2.34

Gain: 11.79dBi